

Presented by Stan Horzepa  
Wolcott Historical Society  
January 5, 2012

# WOLCOTT: HISTORICALLY IN POSTCARDS

# History of Postcards

"Wolcott: Historically in Postcards" by Stan Horzepa, copyright 2012

# Pioneer Era (1870-1898)



"Wolcott: Historically in Postcards" by Stan Horzepa, copyright 2012

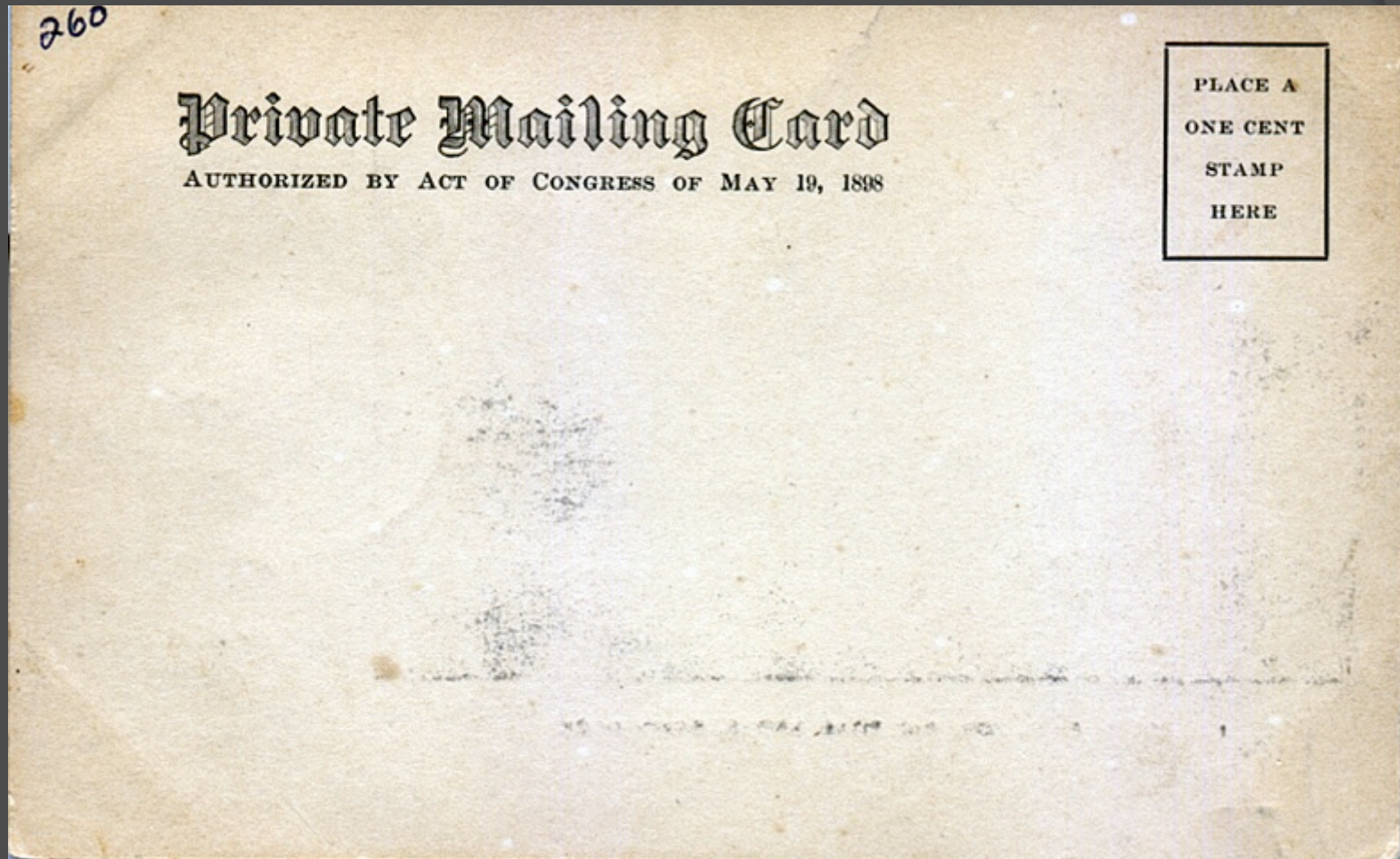
# Private Mailing Card Era (1898-1901)



ICE CREAM PAVILLION, RAILROAD GROVE, SAVIN ROCK

*This is the  
best place to  
get ice cream  
at Savin  
Rock.  
Don't miss  
it when you  
are down.*

# Private Mailing Card Era (1898-1901)



# Real Photo (1900-present)



"Wolcott: Historically in Postcards" by Stan Horzepa, copyright 2012

# Undivided Back Era (1901-1907)



"Wolcott: Historically in Postcards" by Stan Horzepa, copyright 2012

# Undivided Back Era (1901-1907)





# Divided Back Era (1907-1915)

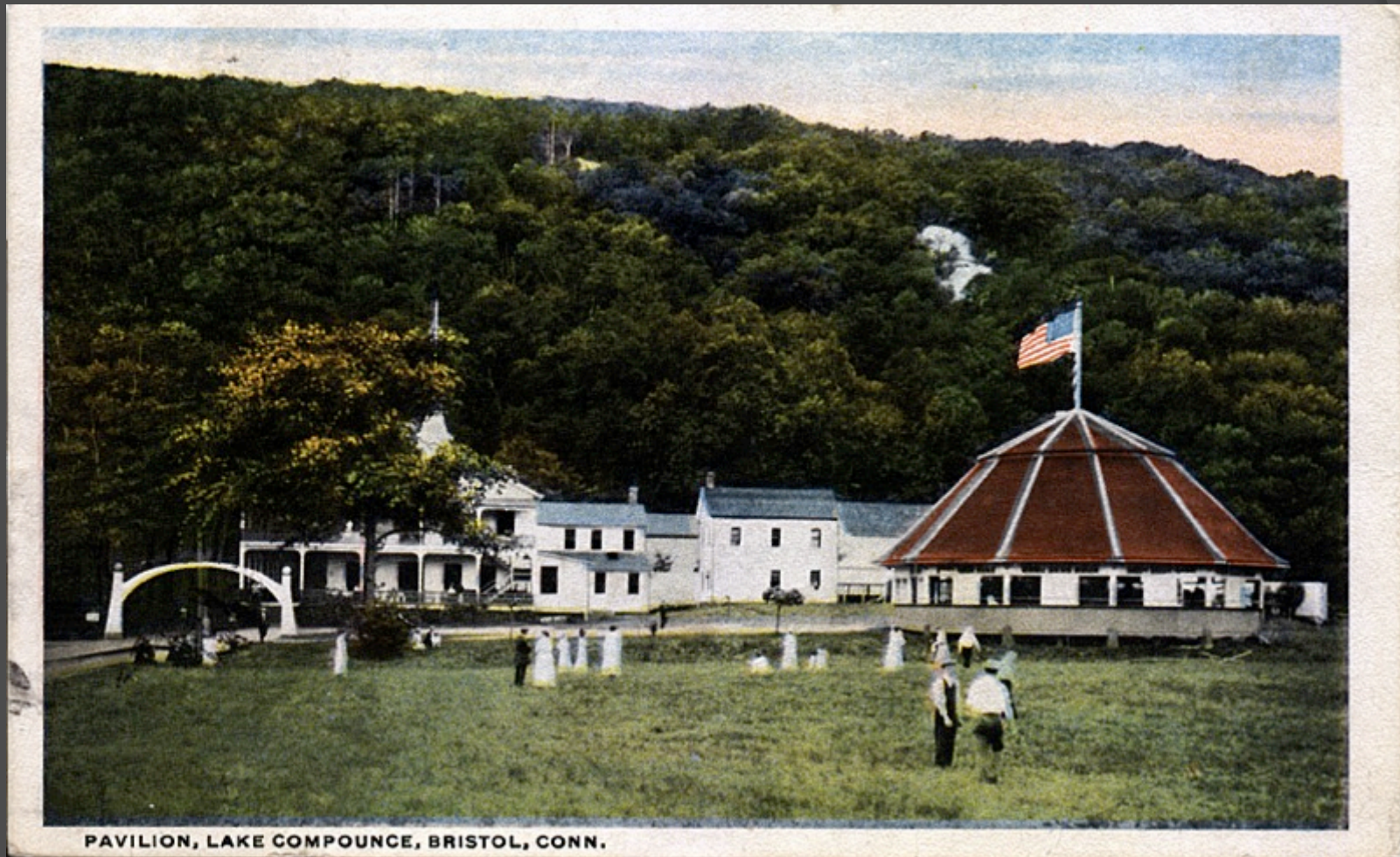


"Wolcott: Historically in Postcards" by Stan Horzepa, copyright 2012

# Divided Back Era (1907-1915)



# White Border (1916-1930)



"Wolcott: Historically in Postcards" by Stan Horzepa, copyright 2012

# Linen Card Era (1930-1945)



"Wolcott: Historically in Postcards" by Stan Horzepa, copyright 2012

# Photochrome Era (1939-present)



"Wolcott: Historically in Postcards" by Stan Horzepa, copyright 2012

# Wolcott: Historically in Postcards

# Geography

"Wolcott: Historically in Postcards" by Stan Horzepa, copyright 2012

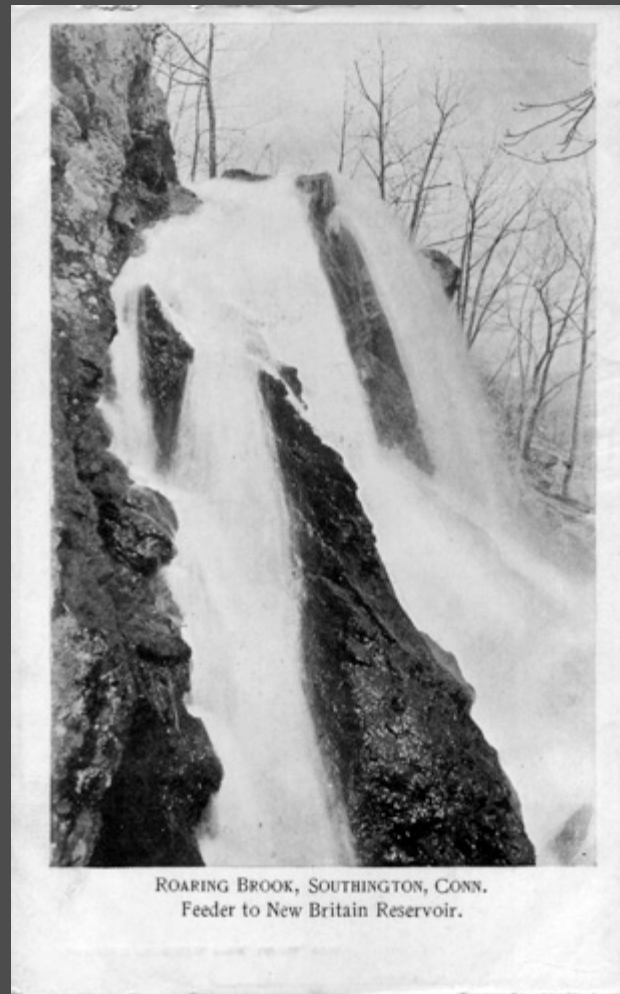
# A Mountain View near Wolcott Conn.

(Real Photo, Date Unknown)





# Roaring Brook, "Southington," "Feeder to New Britain Reservoir" (Photochrome, 1939-present)



ROARING BROOK, SOUTHINGTON, CONN.  
Feeder to New Britain Reservoir.

# Southington Mountain

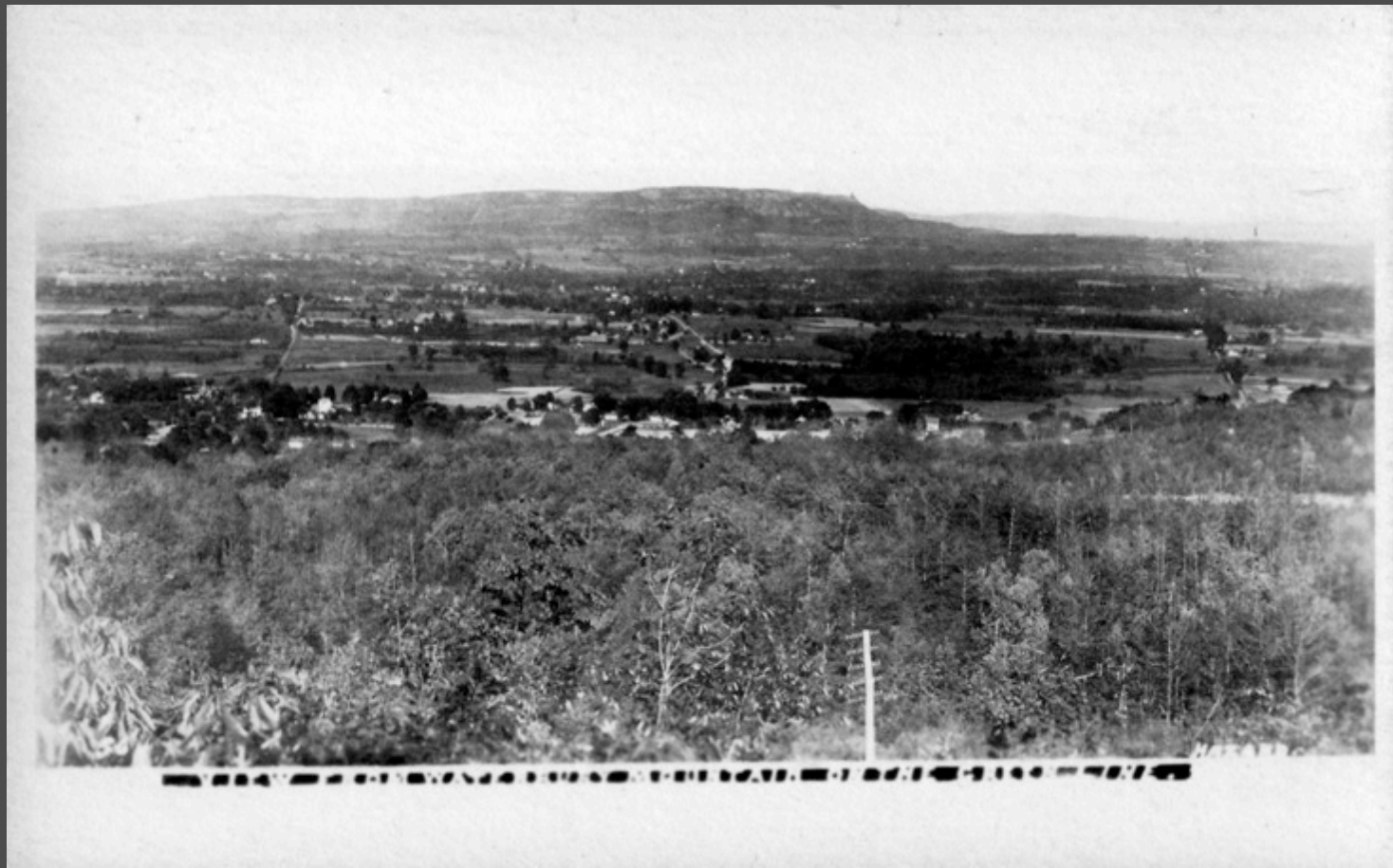
(from Southington Country Club)  
(Photochrome, 1939-present)



"Wolcott: Historically in Postcards" by Stan Horzepa, copyright 2012

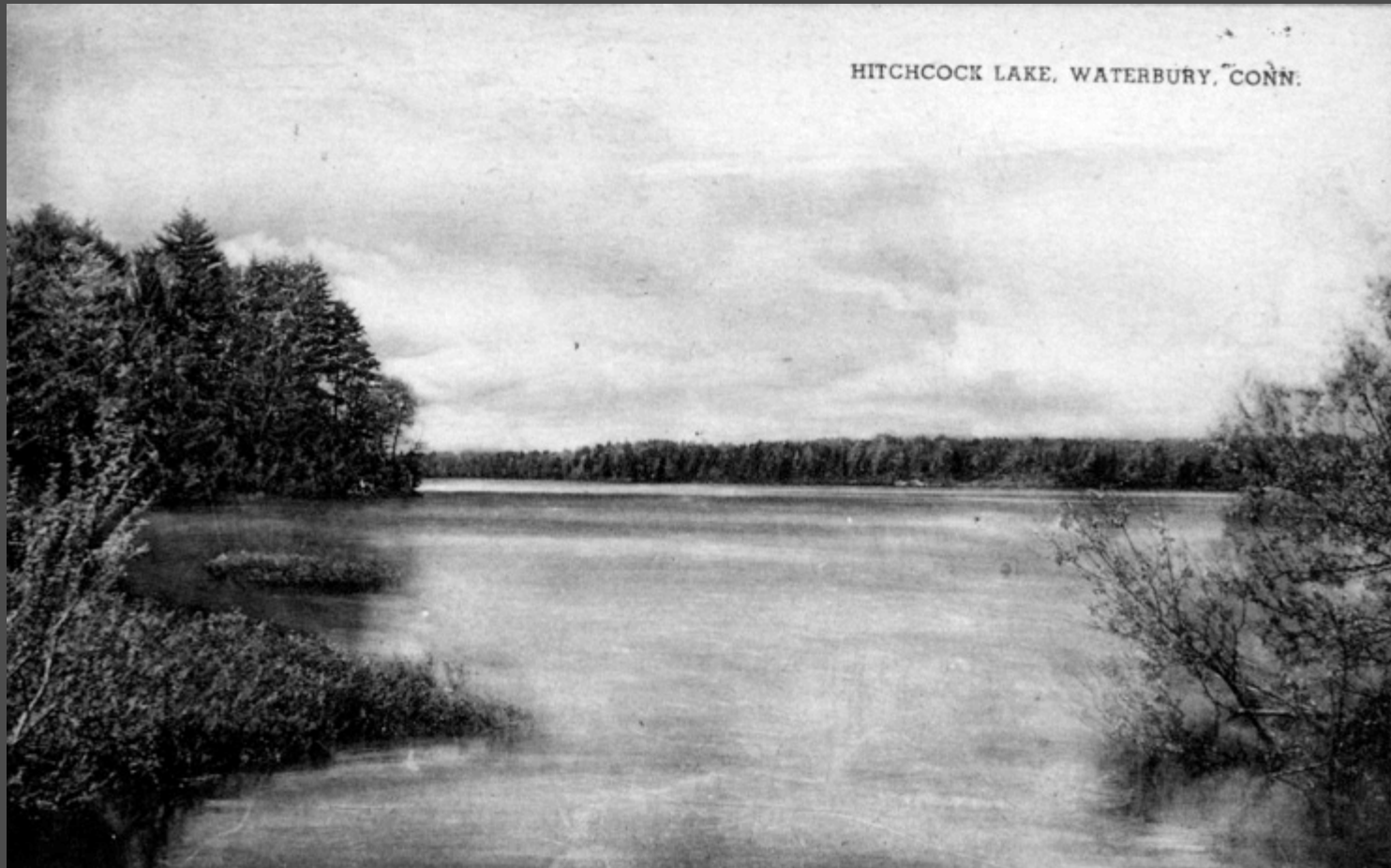
# View from “Waterbury Mountain” on the Green Line

(Real Photo, circa 1913-1927)



# Hitchcock Lake, "Waterbury"

(Divided Back, 1907-1914)



# Lovers Retreat, Hitchcock Lake, “Waterbury” (Linen, Postmarked 1940)



# Hitchcock Lake, Wolcott (Divided Back, Postmarked 1953)



**HITCHCOCK LAKE**  
Wolcott, Connecticut

# Religion

# Congregational Church

(Real Photo, Dated 1908)





# Center School & Congregational Church

(Real Photo, Postmarked 1908)



# Congregational Church

(Real Photo, 1900-present)



"Wolcott: Historically in Postcards" by Stan Horzepa, copyright 2012

# Beecher Memorial Parish House & Congregational Church

(Divided Back, 1907-1914)



"Wolcott: Historically in Postcards" by Stan Horzepa, copyright 2012

# St. Pius X Church

(Photochrome, 1939-present)



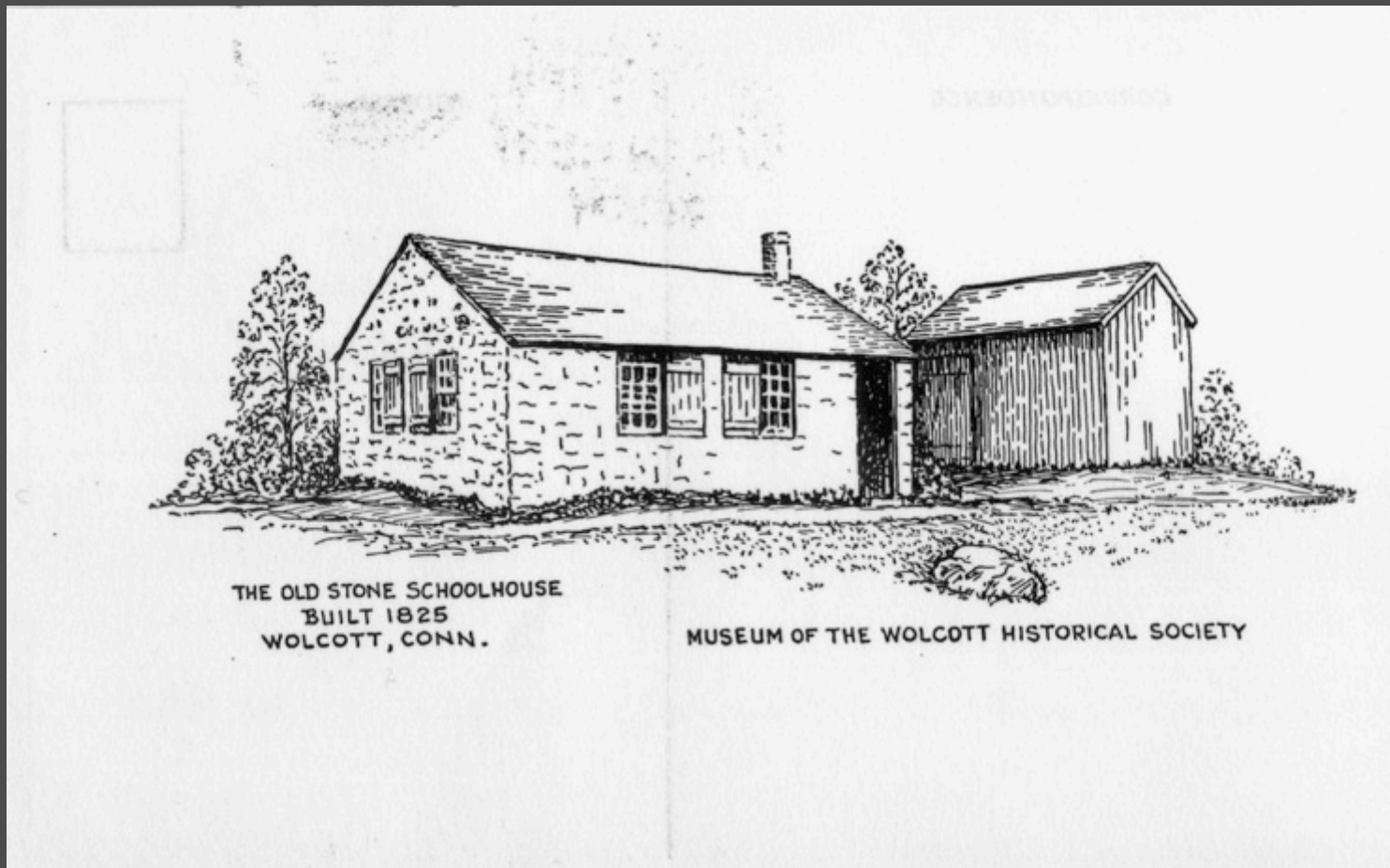
"Wolcott: Historically in Postcards" by Stan Horzepa, copyright 2012

# Education



# Old Stone Schoolhouse

(Divided Back, Postmarked 1999)



# Transportation



# “Bridge on road to Waterbury”

(Real Photo, Dated 1908)



# “Wilds of Wolcott”

(Real Photo, 1900-present)



# Center Street

(Real Photo, Postmarked 1906)



# Meriden-Waterbury Turnpike Top of Southington Mountain (Divided Back, circa 1925)



"Wolcott: Historically in Postcards" by Stan Horzepa, copyright 2012

# “Southington Mountain Road,” “Waterbury”

(Divided Back – White Border, circa 1930)



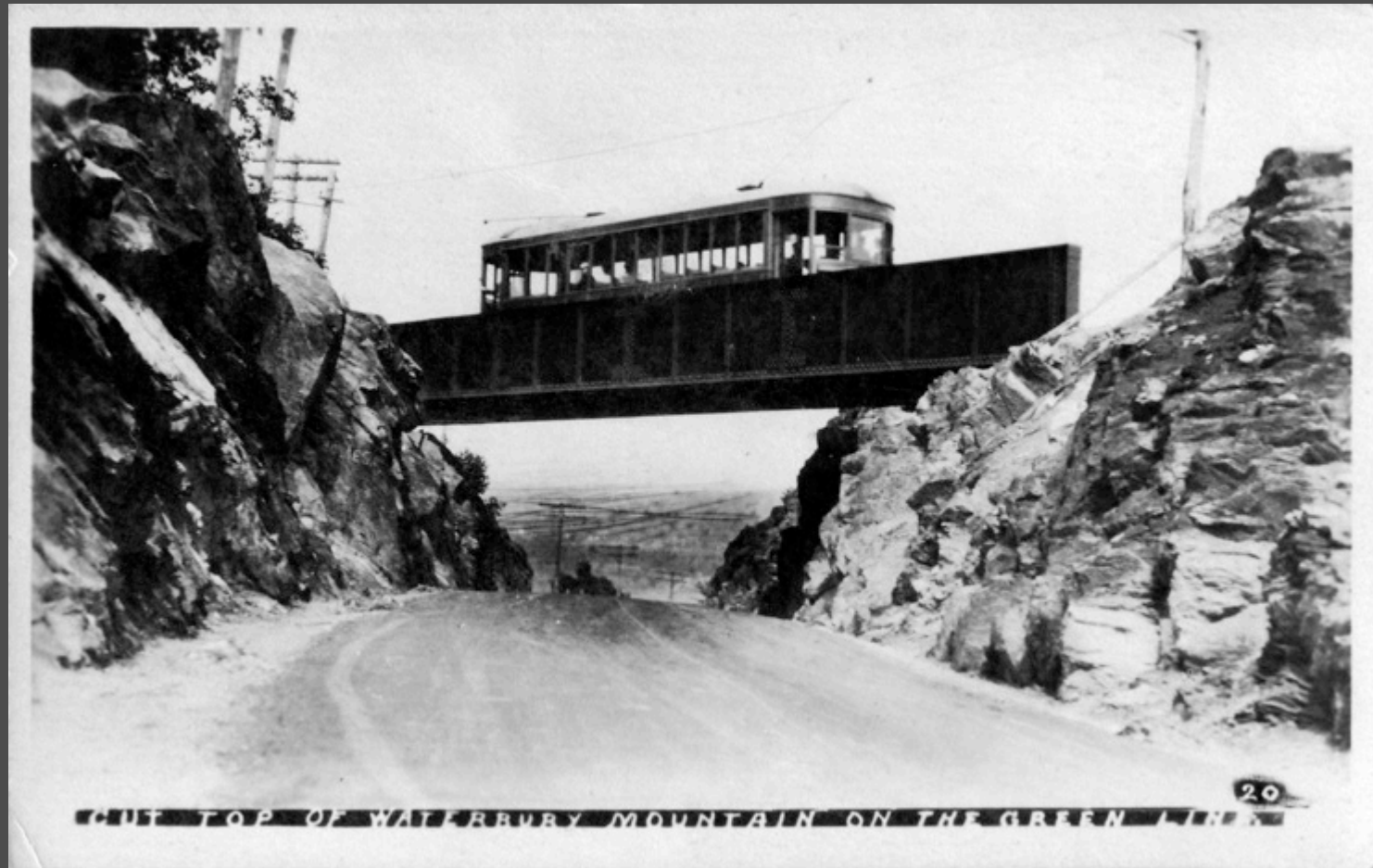
# “Waterbury Mountain” Road, “Steepest in Conn.” (Divided Back, circa 1940)



# “Southington Mountain” Road, “Steepest in Conn.” (Divided Back, circa 1940)



# Green Line Trestle over Meriden-Waterbury Turnpike at the top of "Waterbury" Mountain (Real Photo, circa 1913-1927)





# Top of Southington Mountain on the Green Line (Real Photo, 1920)



# Runaway Trolley on Southington Mountain (Real Photo, 1921)



"Wolcott: Historically in Postcards" by Stan Horzepa, copyright 2012

# Accommodations

"Wolcott: Historically in Postcards" by Stan Horzepa, copyright 2012

# Dew Drop Inn, Hitchcock Lake, Wolcott (Divided Back, Postmarked 1920)

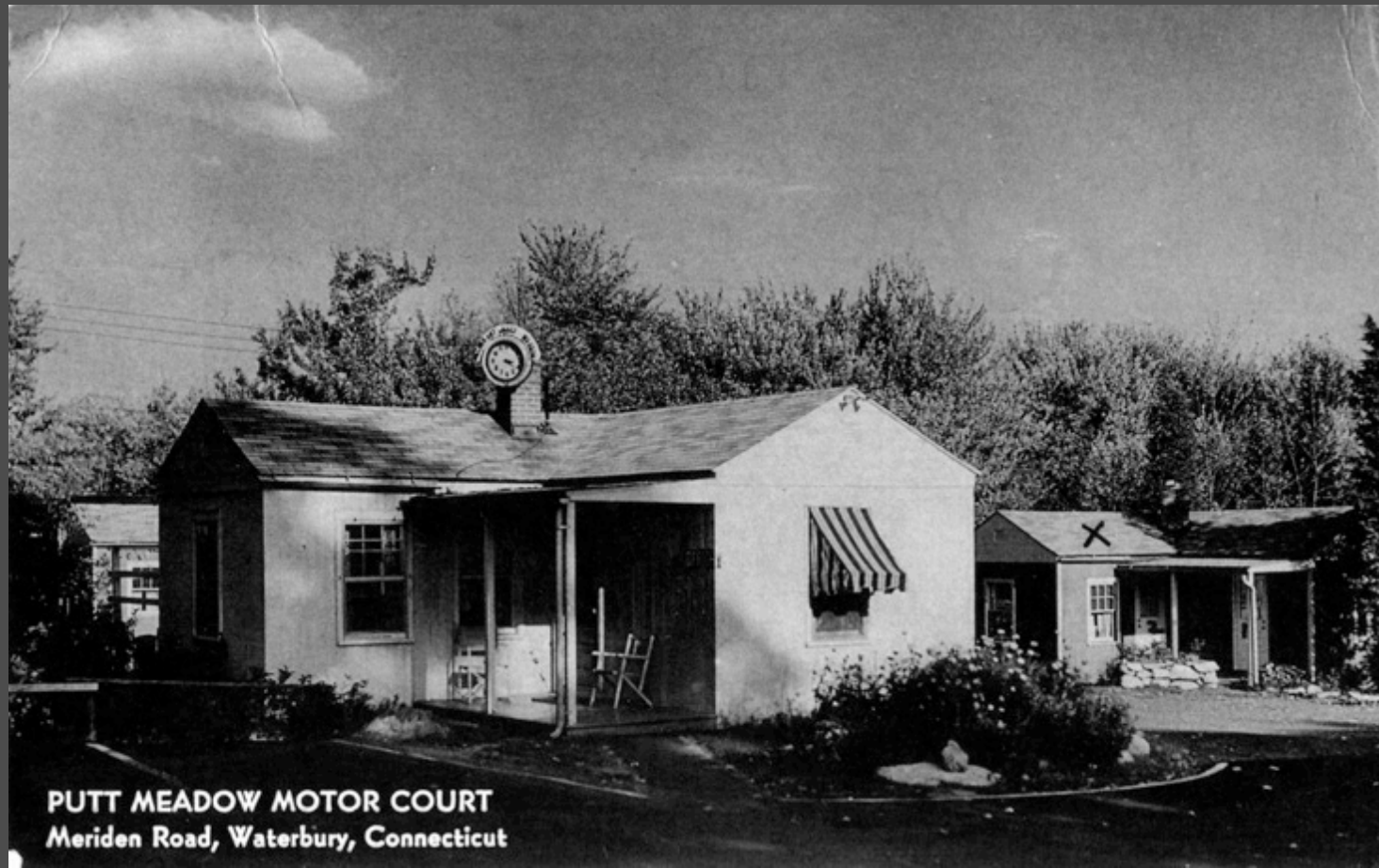


# Iceland, Lake Hitchcock

Route 14, Wolcott (Photochrome, circa 1940)

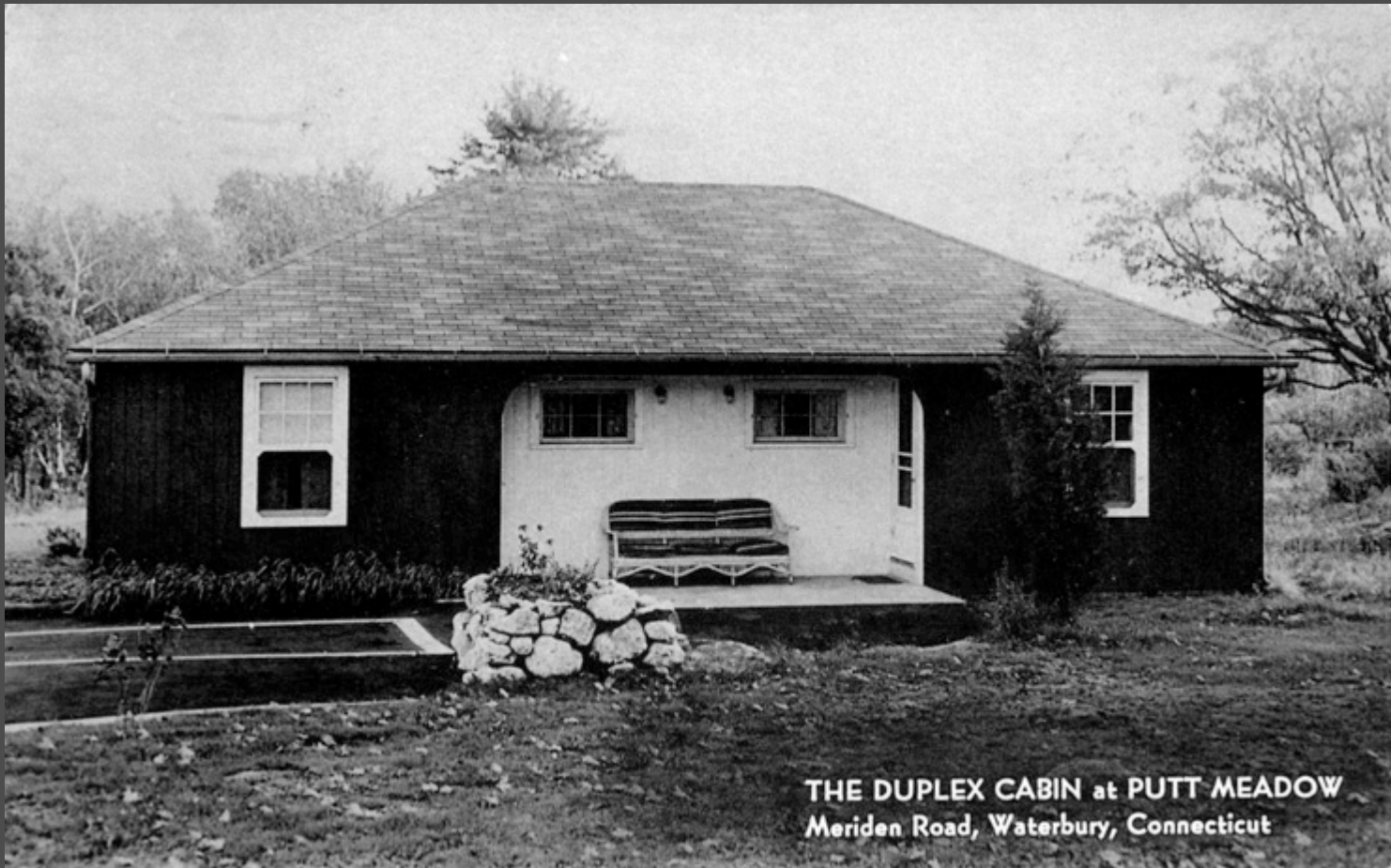


# Putt Meadow Motor Court Meriden Road, Waterbury (Divided Back, Postmarked 1952)



**PUTT MEADOW MOTOR COURT**  
Meriden Road, Waterbury, Connecticut

# Putt Meadow Motor Court Meriden Road, Waterbury (Divided Back, Postmarked 1956)



**THE DUPLEX CABIN at PUTT MEADOW**  
Meriden Road, Waterbury, Connecticut

# Putt Meadow Motor Court Meriden Road, Waterbury

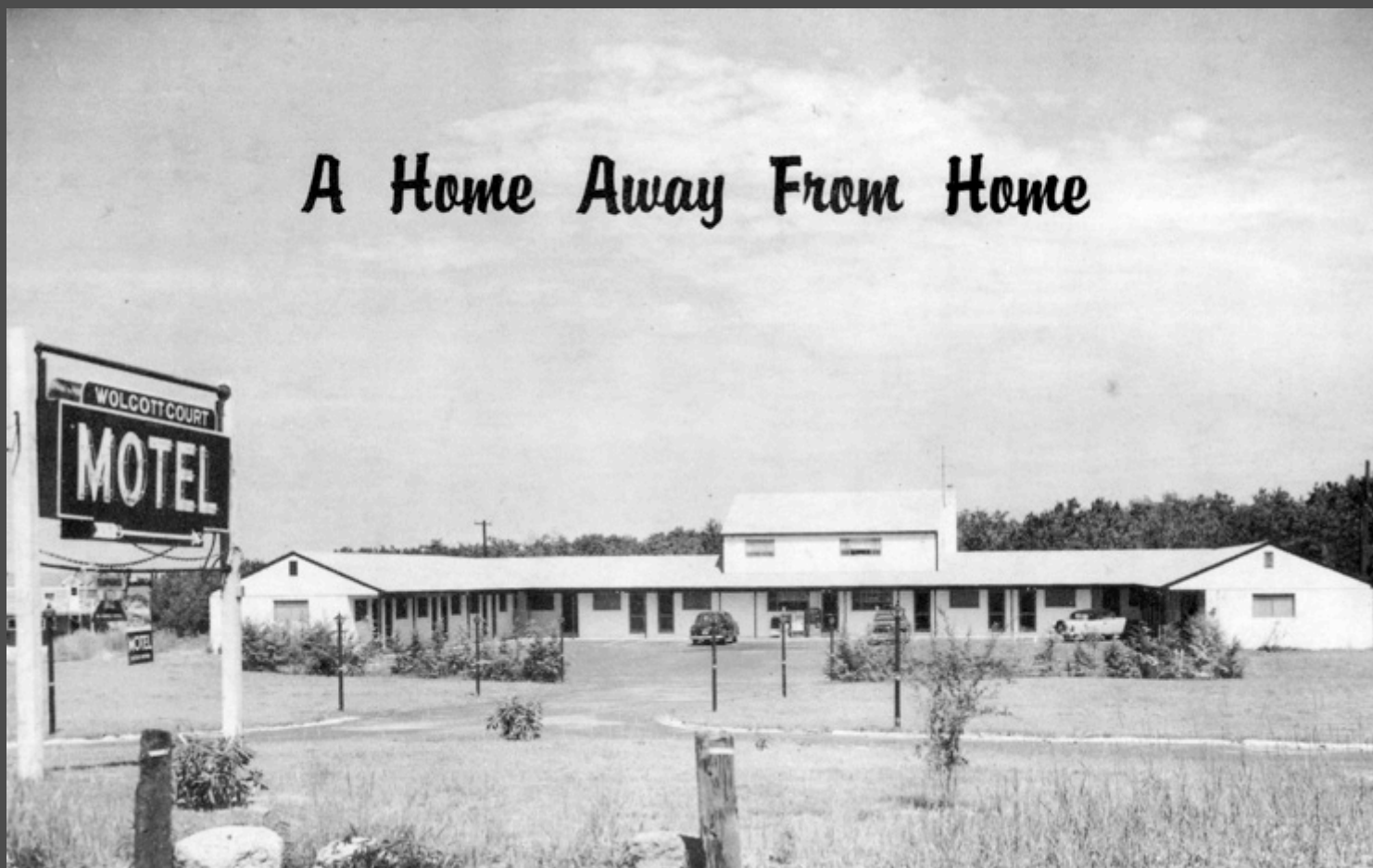
“camp site of Gen. Israel Putnam’s Revolutionary  
Army” (Photochrome, circa 1955)





# Wolcott Court Motel

(Photochrome, circa 1960)



# Dining

# Keg Room, Long Acre Inn

(Photochrome 1939-present)



"Wolcott: Historically in Postcards" by Stan Horzepa, copyright 2012

# Long Acre Inn

(Photochrome 1939-present)



"Wolcott: Historically in Postcards" by Stan Horzepa, copyright 2012

# Recreation

"Wolcott: Historically in Postcards" by Stan Horzepa, copyright 2012

# Scovill Recreation Area

(Photochrome circa 1960)



"Wolcott: Historically in Postcards" by Stan Horzepa, copyright 2012

# Famous People

# Seth Thomas Watch & Marine Shop Thomaston (Divided Back, 1907-1914)



"Wolcott: Historically in Postcards" by Stan Horzepa, copyright 2012



# Oliver Wolcott House (1753)

## Litchfield (Photochrome 1939-present)



"Wolcott: Historically in Postcards" by Stan Horzepa, copyright 2012

That's all, Folks!

